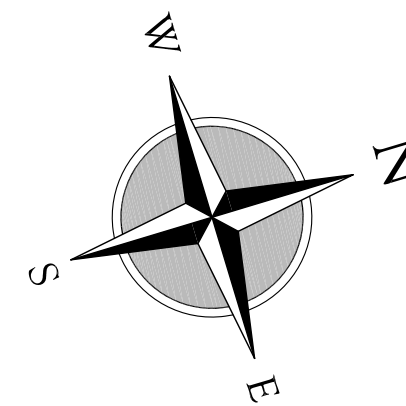


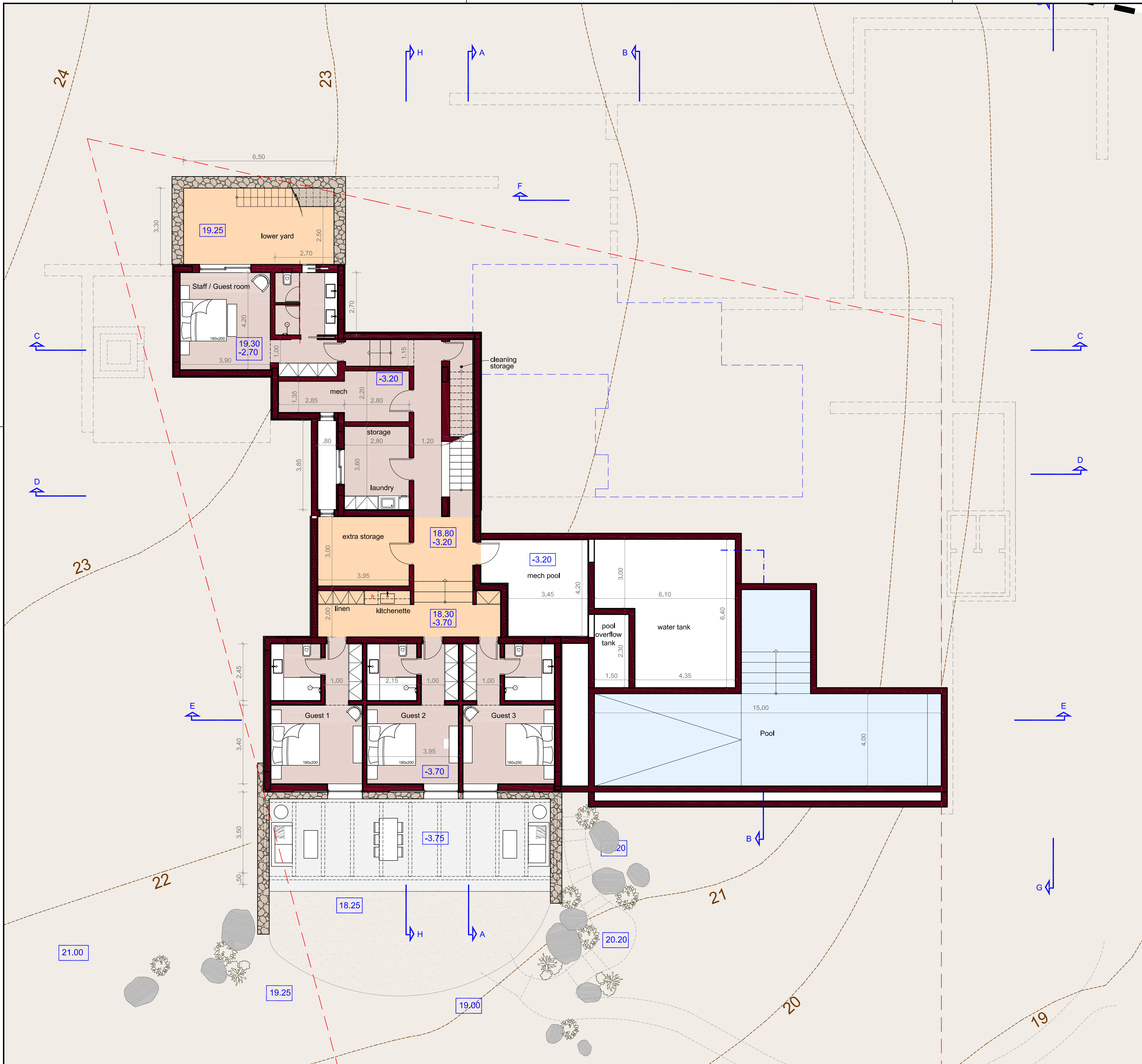
FINAL

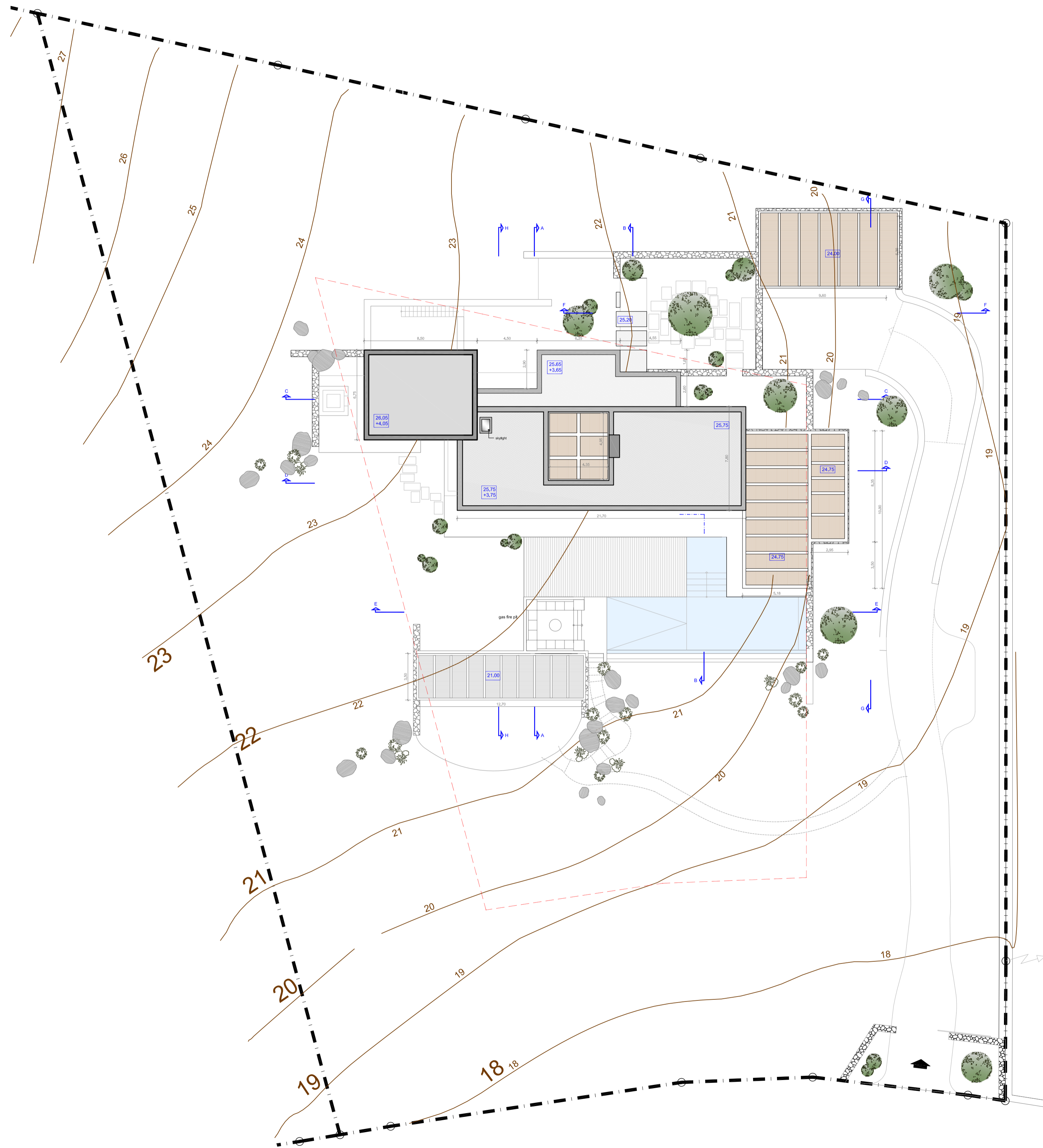
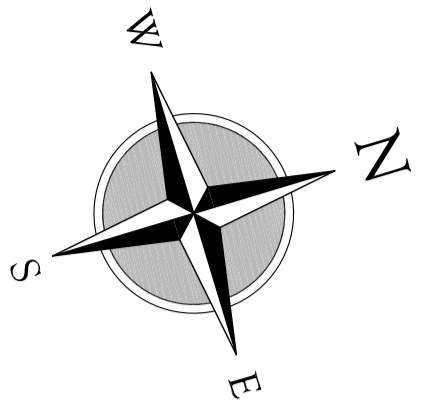
Ground floor	210.00m ²
Main house	: 172.00m ²
Areas not included in permit	: 38.00m ²
Pool support areas	: 25.00m ²
Total GF(living areas)	: 235.00m ²
Shaded areas & pergolas	: 115.00m ²
Paved areas & Sun decks	: 175.00m ²
Parking pergola	: 55.00m ²
Pool	: 85.00m ²



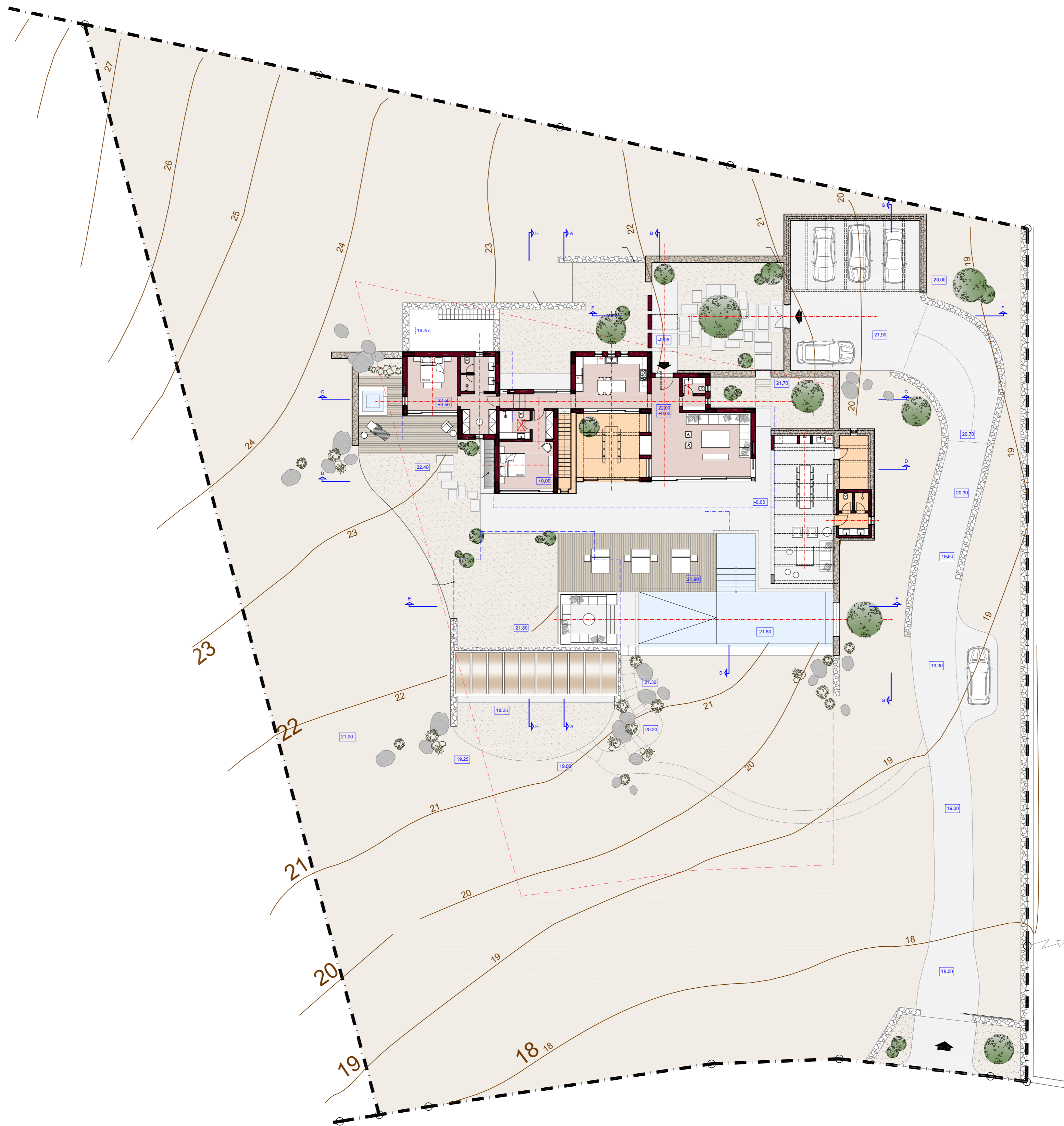
FINAL

Lower level	total : 220.00m²
Guest & Utility areas	: 90.00m ²
Areas not included in permit	: 41.00m ²
Underground prime areas	
Guest suites 1, 2 & 3	: 87.00m ²
counting 43.50 in permit	
Technical	: 62.00m²
Pool mec.	: 19.00m ²
Pool overflow tank	: 10.00m ³
Water tank	: 90.00m ³
Lower yard	: 20.00m²
Pergolas	: 45.00m ²
Paved areas	: 50.00m ²





FINAL



FINAL