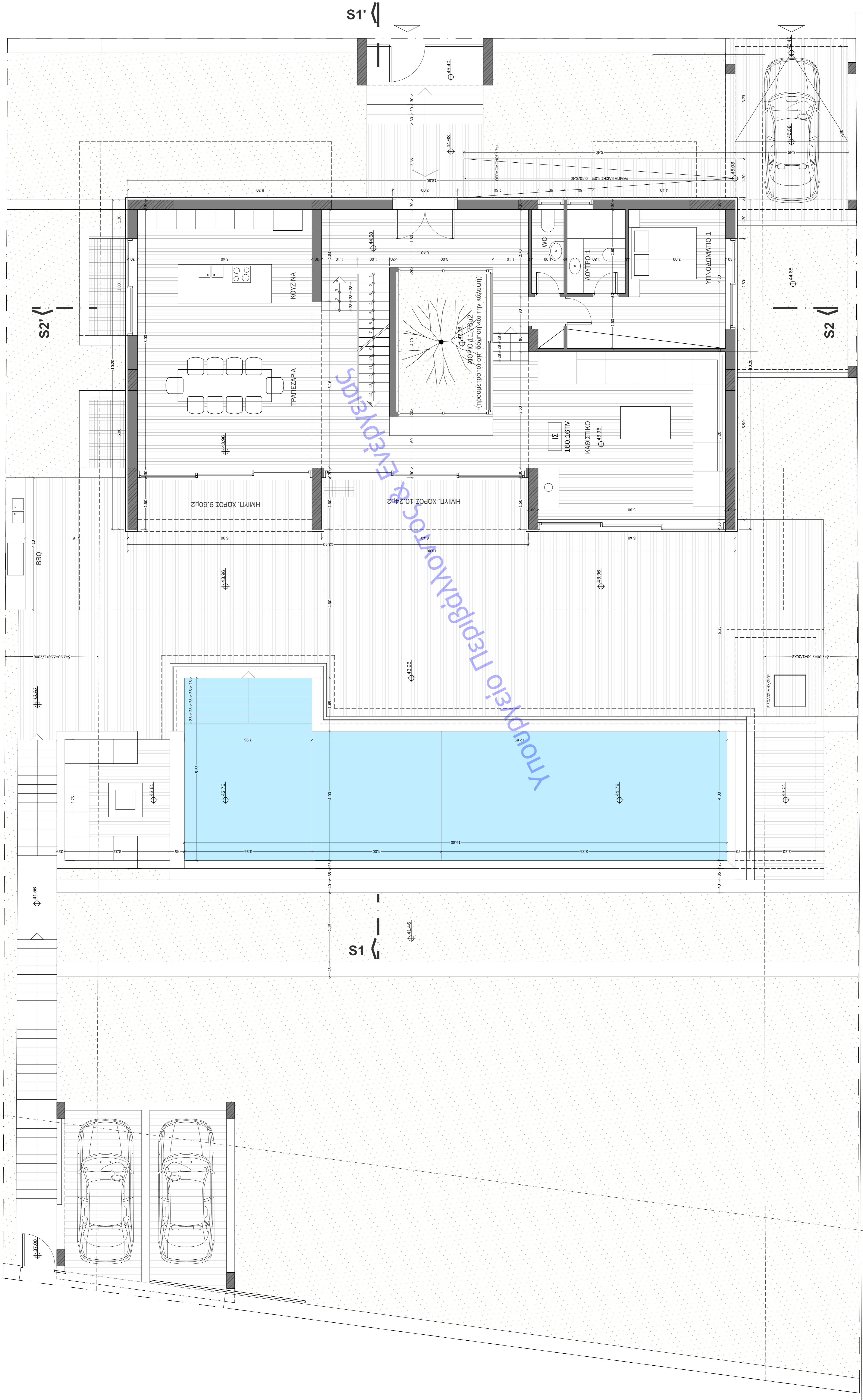
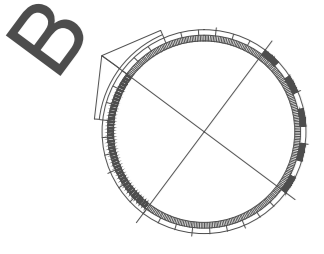
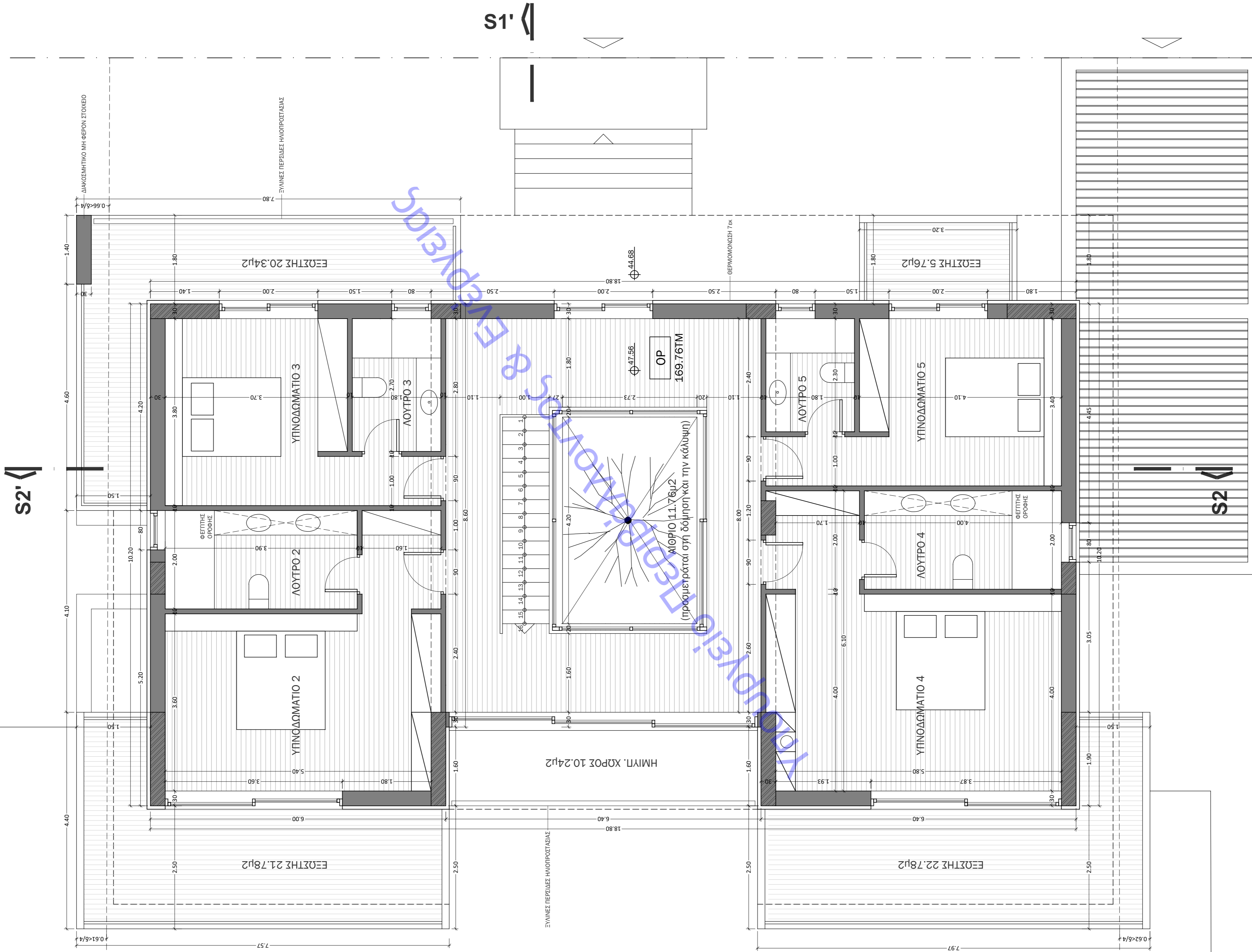


ΕΠΙΦΑΝΕΙΑ ΚΑΛΥΨΗΣ = 10,20x18,80 = 191,76μ²
 ΕΠΙΦΑΝΕΙΑ ΔΟΜΗΣΗΣ = 191,76x12,40+1,60=191,76x19,84=171,92μ²
 ΕΠΙΦΑΝΕΙΑ Η/Υ ΧΩΡΩΝ = 12,40x1,60 = 19,84μ²
 ΕΠΙΦΑΝΕΙΑ ΕΞΩΤΕΡΩΝ = 0μ²
 ΟΛΙΚΟΣ = 64,23+2,88+107,69+3,60=184,38+387,68=572,06μ²





ΕΠΙΦΑΝΕΙΑ ΔΟΜΗΣΗΣ = $10.20 \times 18.80 - 6.40 \times 1.60 = 191.76 - 10.24 = 181.52 \mu\text{m}^2$
 ΕΠΙΦΑΝΕΙΑ Η/Υ ΧΩΡΩΝ = $1.60 \times 6.40 = 10.24 \mu\text{m}^2$
 ΕΠΙΦΑΝΕΙΑ ΕΞΩΣΤΩΝ = $(7.57 + 7.97) \times 2.50 + (1.90 + 1.90 + 4.20) \times 1.50 + (7.80 + 3.20) \times 1.80 = 38.85 + 12.00 + 19.80 = 70.65 \mu\text{m}^2$
 ΟΥΚΟΣ = $(181.52 + 10.24) \times 3.44 \mu = 659.66 \mu\text{m}^3$

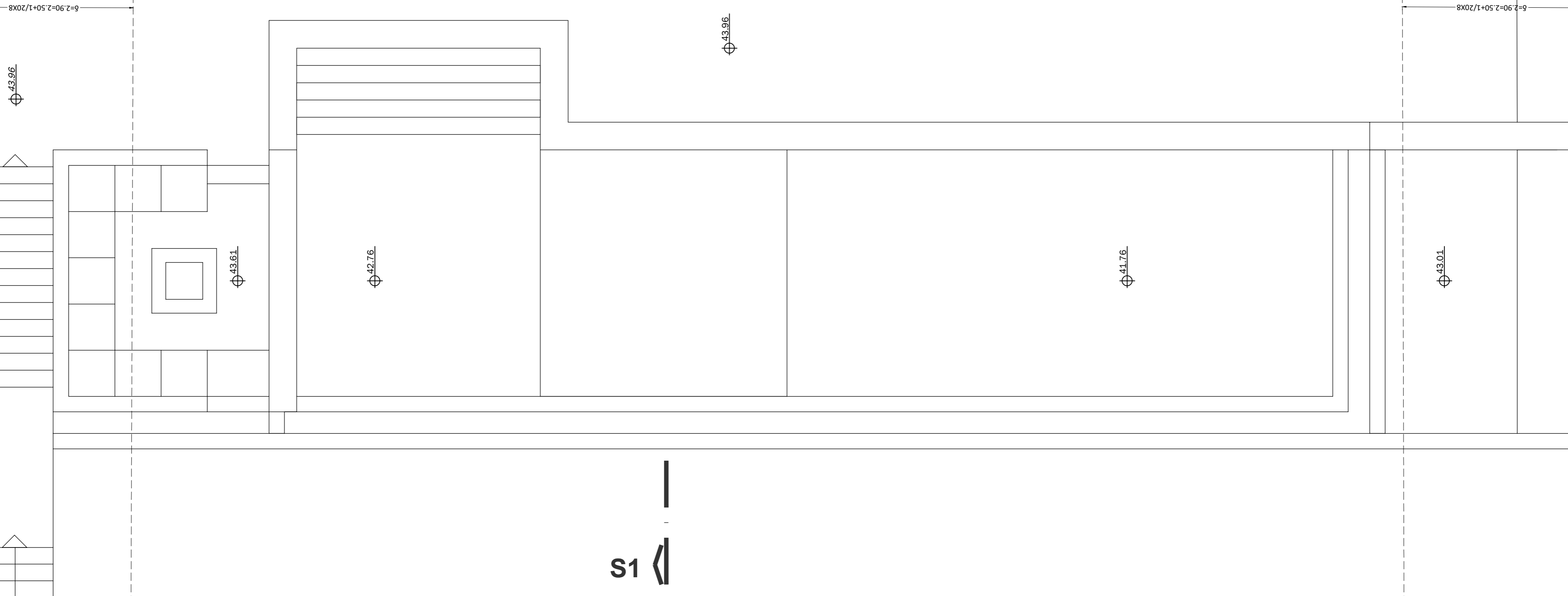


S2

S1

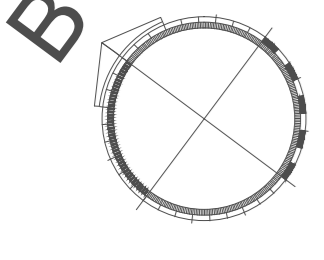
S2

S1

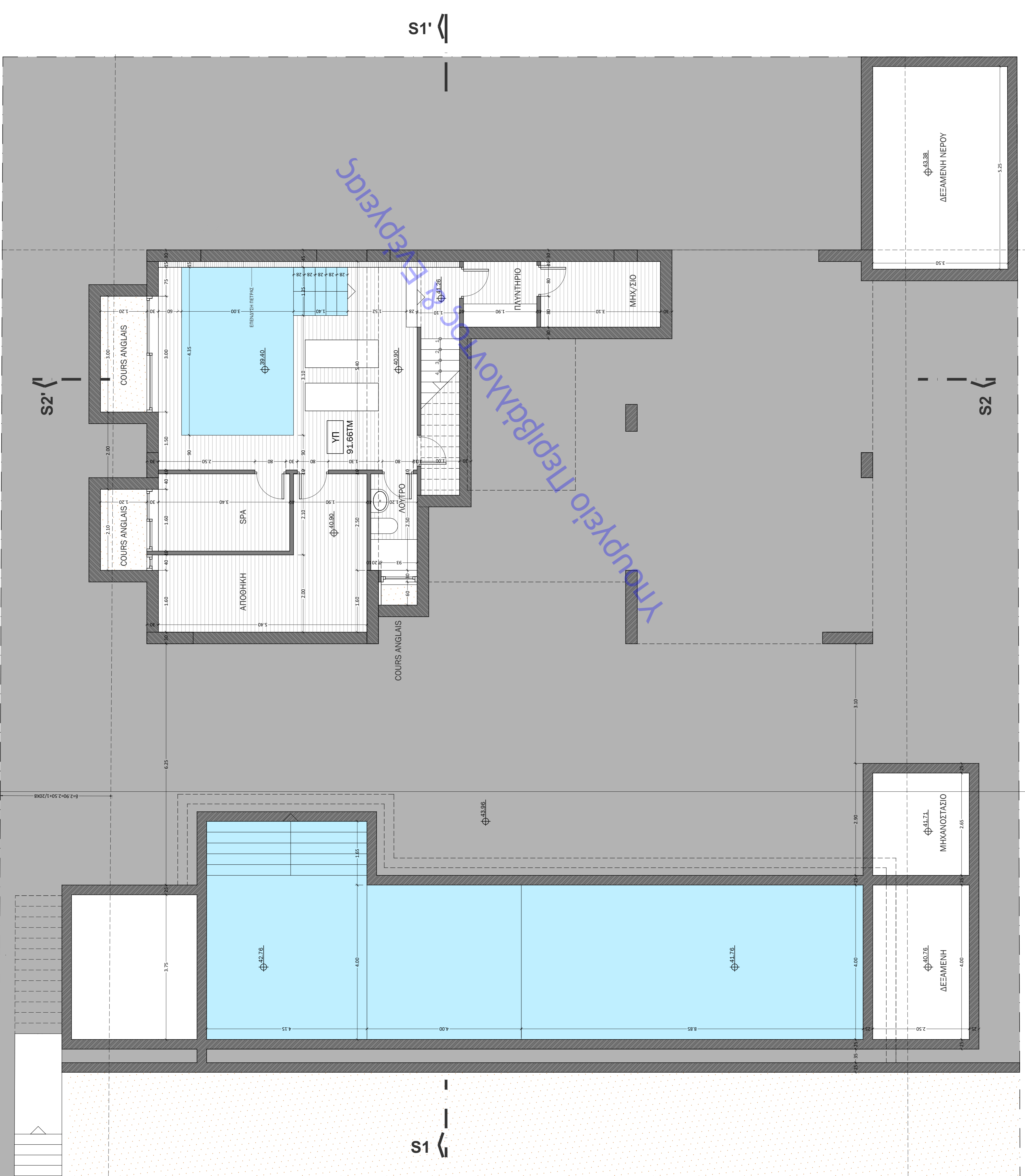


6-2-90-2.50+1.20x8

6-3-90-2.50+1.20x8



ΕΠΙΘΑΝΕΙΑ ΒΟΗΘΗΤΙΚΩΝ ΧΩΡΩΝ = 91.66
ΟΤΙΚΟΣ = 0μ3



S2

S1

S2

S1

6=2-90-2.50+1.20x8

42.76

3.75

42.76

4.00

4.15

4.00

8.85

41.76

4.00

4.00

2.50

ΔΕΞΑΜΕΝΗ

41.71

ΜΗΧΑΝΟΣΤΑΣΙΟ

2.65

4.00

ΔΕΞΑΜΕΝΗ ΝΕΡΟΥ

43.38

ΔΕΞΑΜΕΝΗ ΝΕΡΟΥ

5.25

ΥΠΟΥΡΓΕΙΟ ΠΕΡΙΒΑΛΛΟΝΤΟΣ ΚΑΙ ΕΝΕΡΓΕΙΑΣ